



---

HOSPITAL STATISTICS  
AND ACCOUNTS  
**LANDSPÍTALI 2016**

---

## Compassion – Professionalism – Safety – Progress

**Landspítali is the university hospital and main hospital of Iceland and a referral hospital for the whole country.**

**Landspítali is organized as divisions that offer diverse clinical services in outpatient clinics, day patient units, inpatient wards, clinical laboratories and other departments. The hospital's support divisions provide a range of services related to teaching and training of clinical staff, human resources, finance and economics, information technology and operations.**

### **Executive Committee**

Páll Matthíasson Chief Executive Officer

Alma Möller Chief Executive of Perioperative Services

Ásta Bjarnadóttir Chief Executive of Human Resources

Benedikt Olgeirsson Chief Executive of Development

Guðlaug Rakeł Guðjónsdóttir Chief Executive of Emergency, Geriatrics, Rehabilitation Services

Hlíf Steingrimsdóttir Chief Executive of Internal Medicine

Ingólfur Þórisson Chief Executive of Facilities and Operational Services

Jón Hilmar Friðriksson Chief Executive of Diagnostic Medicine Services

Lilja Stefánsdóttir Chief Executive of Surgical Services

Linda Kristmundsdóttir Chief Executive of Women and Children's Services

María Einisdóttir Chief Executive of Mental Health Services

María Heimisdóttir Chief Executive of Finance and Information

Ólafur Baldursson Chief Medical Executive

Sigríður Gunnarsdóttir Chief Nursing Executive

### **Hospital Statistics and Financial Accounts**

Landspítali, Division of Finance and Information

Eiríksgata 5, 101 Reykjavík, Iceland

Tel: +354 543 1000

[www.landspitali.is](http://www.landspitali.is)

## Table of Contents

A typical day at Landspítali .....	2
Key statistics for Landspítali .....	3
Key figures, clinical divisions .....	4
Clinical services.....	6
Quality indicators .....	12
Academic research .....	13
Human resources .....	14
Financial accounts .....	15
Five year statistical overview .....	17



## A typical day at Landspítali (2016)

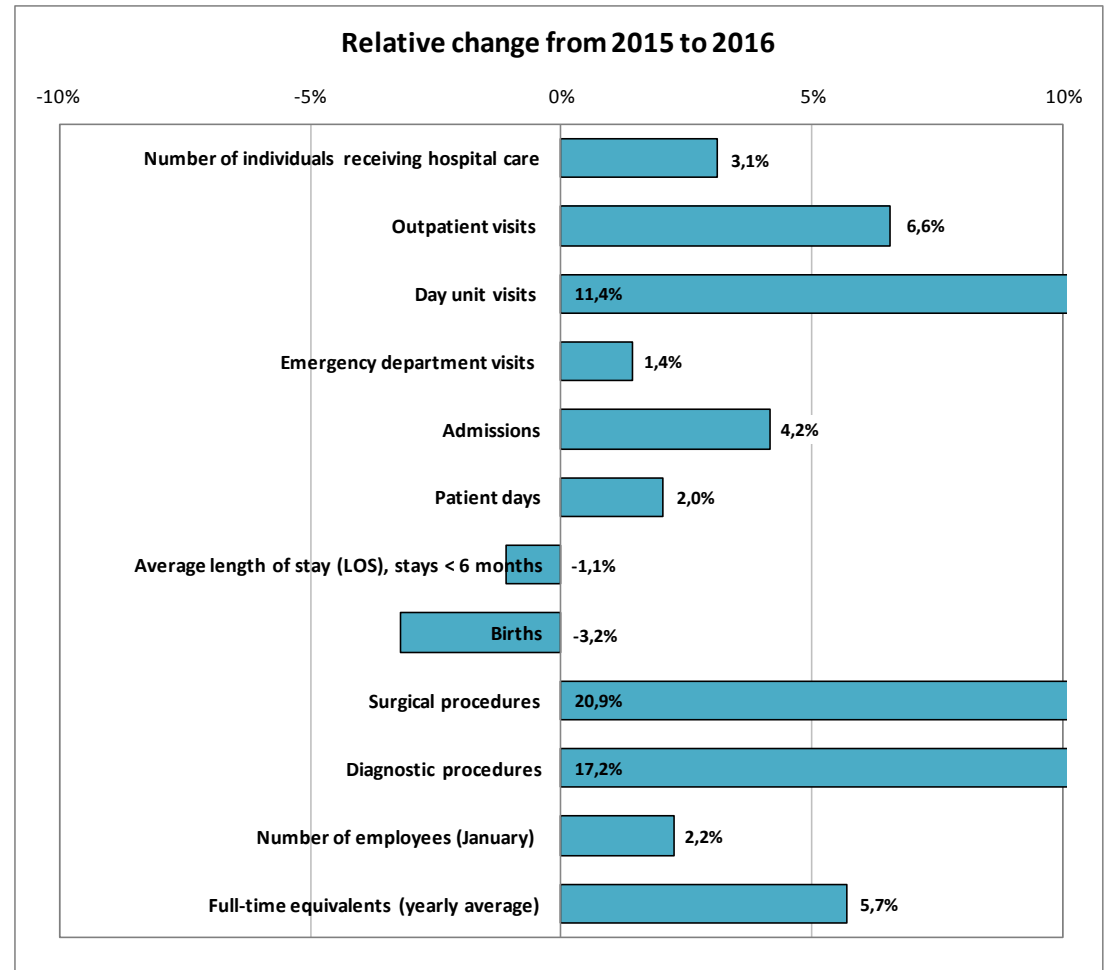
- **620** inpatients
- **1.300** day- and outpatient visits
- **80** new admissions
- **6.200** laboratory tests
- **570** visits to physio- and occupational therapists
- **290** emergency unit visits
- **63** surgical procedures
- **8** babies born
- **140** outpatient mental health visits
- **38** visits at pediatric emergency unit
- **7** cardiac catheterizations
- **25** patients in hemodialysis
- **12** patients in intensive-care units
- **3.700** employees at work
- **3,3** tons of waste, 30% recycled
- Electricity usage equals use in **4.200** homes

# Key statistics for Landspítali

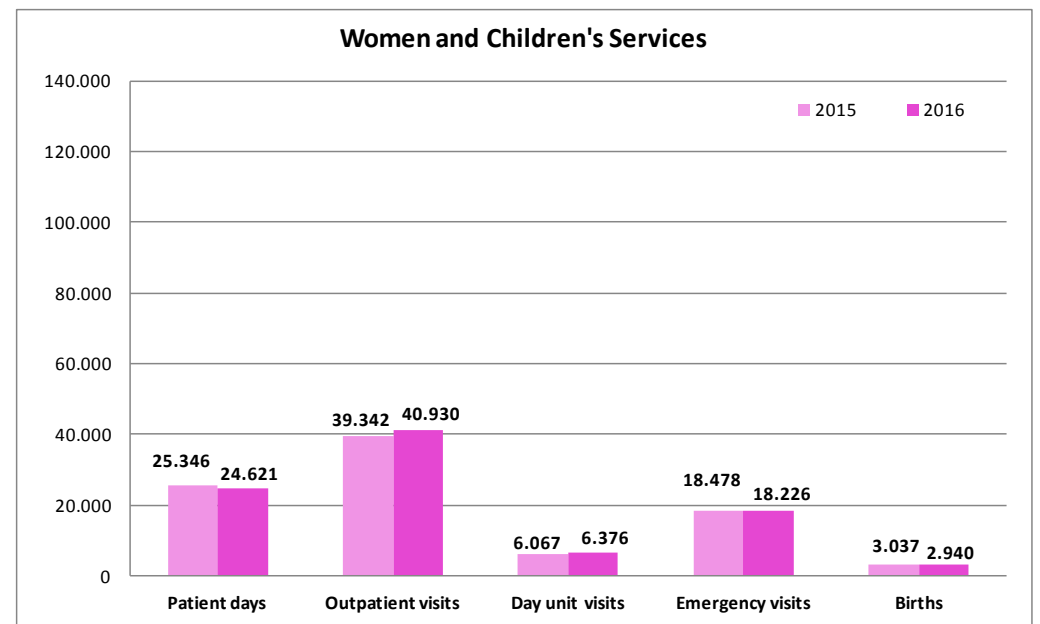
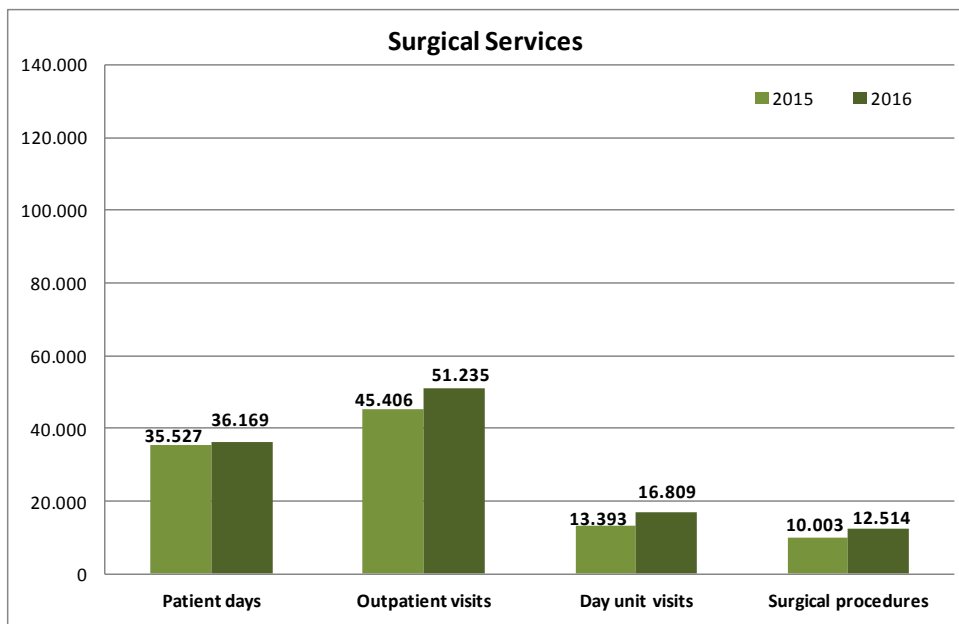
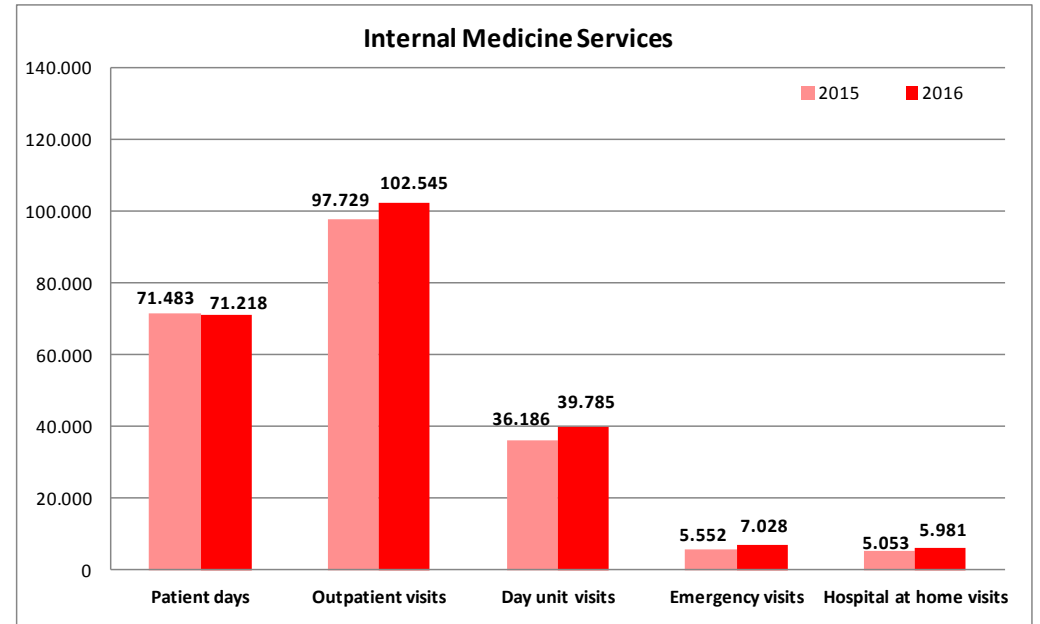
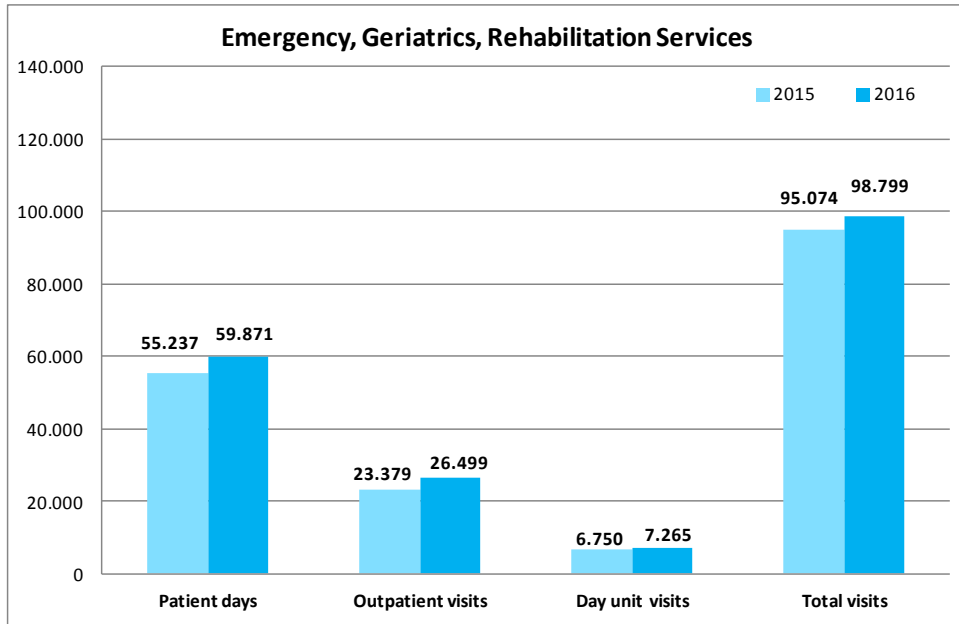
Key statistics for Landspítali

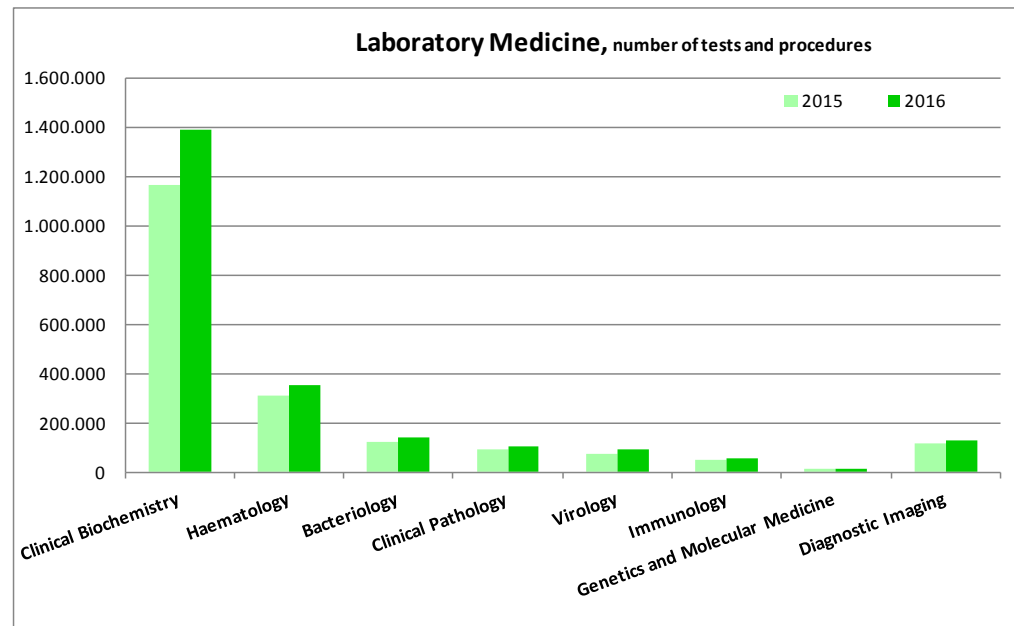
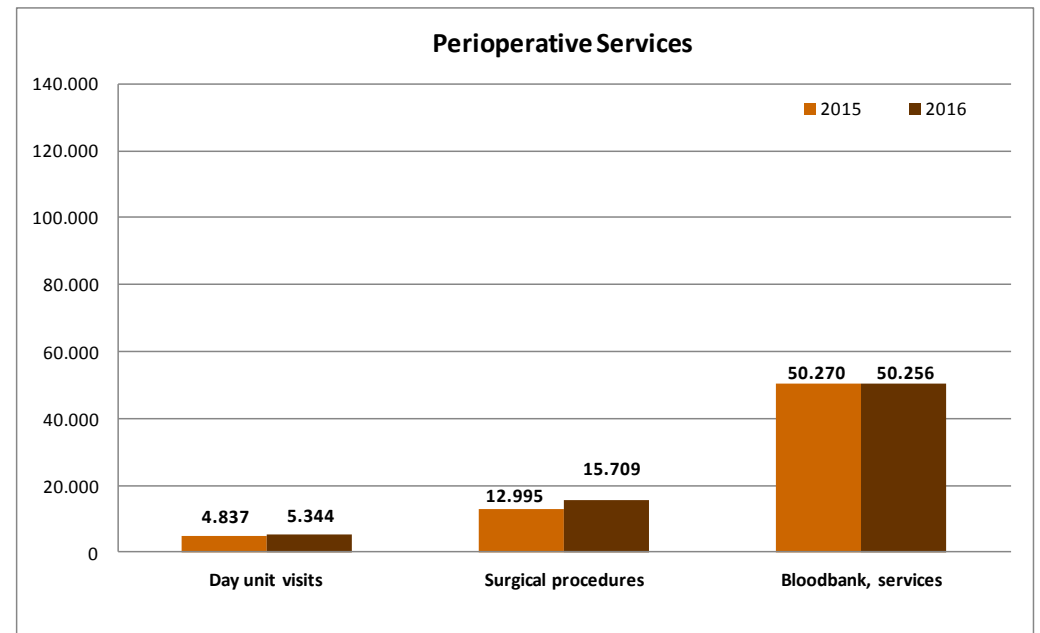
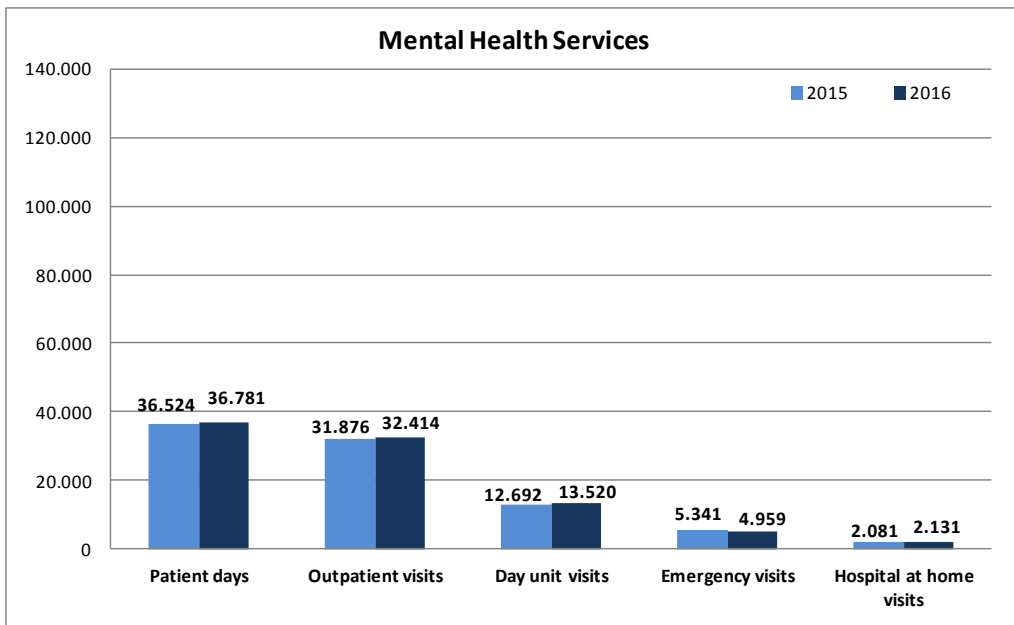
	2016	2015	2016-2015	Increase/ decrease
Number of individuals receiving hospital care <sup>1)</sup>	110.235	106.912	3.323	3,1%
Outpatient visits	241.335	226.488	14.847	6,6%
Day unit visits	83.651	75.088	8.563	11,4%
Emergency department visits	102.513	101.066	1.447	1,4%
Admissions	26.277	25.227	1.050	4,2%
Patient days	228.660	224.117	4.543	2,0%
Average length of stay (LOS), stays < 6 months	7,8	7,9	-0,1	-1,1%
Births	2.940	3.037	-97	-3,2%
Surgical procedures	15.709	12.995	2.714	20,9%
Diagnostic procedures	2.266.755	1.933.698	333.057	17,2%
Number of employees (January)	5.131	5.019	112	2,2%
Full-time equivalents (yearly average)	3.951	3.739	212	5,7%

<sup>1)</sup> Each individual may have received care on more than one occasion, but is counted here only once.



# Key figures, clinical divisions





# Clinical services

## Inpatient Services

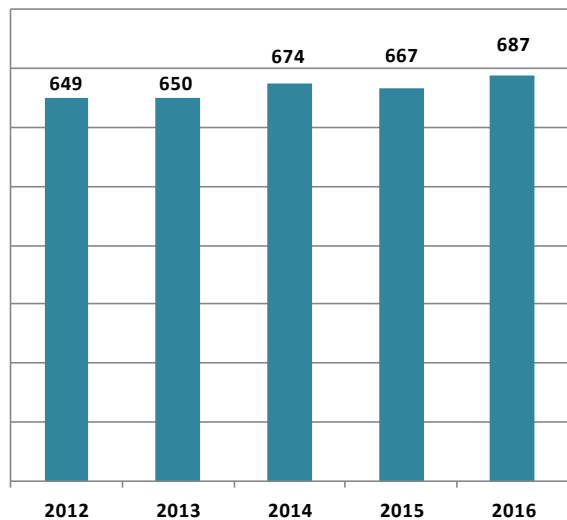
	Admissions		Increase/ decrease	Patient days		Increase/ decrease	Average length of stay		Increase/ decrease
	2016	2015		2016	2015		2016	2015	
Women and Children's Services	7.183	7.213	-0,4%	24.621	25.346	-2,9%	3,4	3,5	-1,5%
Mental Health Services	2.169	2.132	1,7%	36.781	36.524	0,7%	13,9	13,5	2,9%
Internal Medicine Services	8.069	8.221	-1,8%	71.218	71.483	-0,4%	8,9	8,8	0,9%
Surgical Services	7.144	6.144	16,3%	36.169	35.527	1,8%	5,0	5,6	-10,3%
Emergency, geriatrics, rehabilitation services	1.712	1.517	12,9%	59.871	55.237	8,4%	30,3	31,2	-3,0%
<b>Total</b>	<b>26.277</b>	<b>25.227</b>	<b>4,2%</b>	<b>228.660</b>	<b>224.117</b>	<b>2,0%</b>	<b>7,9</b>	<b>7,5</b>	<b>4,8%</b>

## Outpatient Services

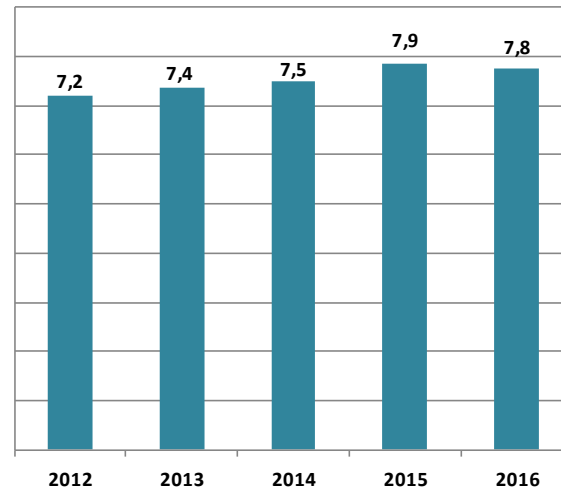
	Outpatient visits		Increase/ decrease	Day visits		Increase/ decrease
	2016	2015		2016	2015	
Women and Children's Services	40.930	39.342	4,0%	6.376	6.067	5,1%
Mental Health Services	32.414	31.876	1,7%	13.520	12.692	6,5%
Internal Medicine Services <sup>1)</sup>	102.545	97.729	4,9%	39.785	36.186	9,9%
Surgical Services	51.235	45.406	12,8%	16.809	13.393	25,5%
Perioperative Services <sup>1)</sup>	-	-	-	5.344	4.837	10,5%
Emergency, geriatrics, rehabilitation services	10.996	9.244	19,0%	7.265	6.750	7,6%
Laboratory Medicine Services (Genetics and Molecular Medicine)	825	767	7,6%	0	0	-
Employee Health Care	2.390	2.124	12,5%	0	0	-
<b>Total</b>	<b>241.335</b>	<b>226.488</b>	<b>6,6%</b>	<b>83.755</b>	<b>75.088</b>	<b>11,5%</b>

1) Gastroenterology is part of Internal Medicine, however the gastroscopic day service is part of Perioperative Services. It is therefore counted in both, but only once in the total number.

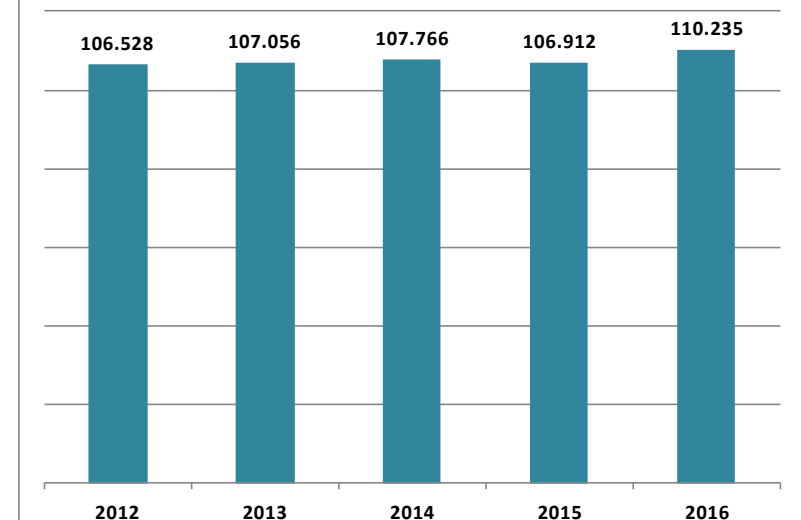
Number of hospital beds



Average length of stay (days)  
(stays < 6 months)



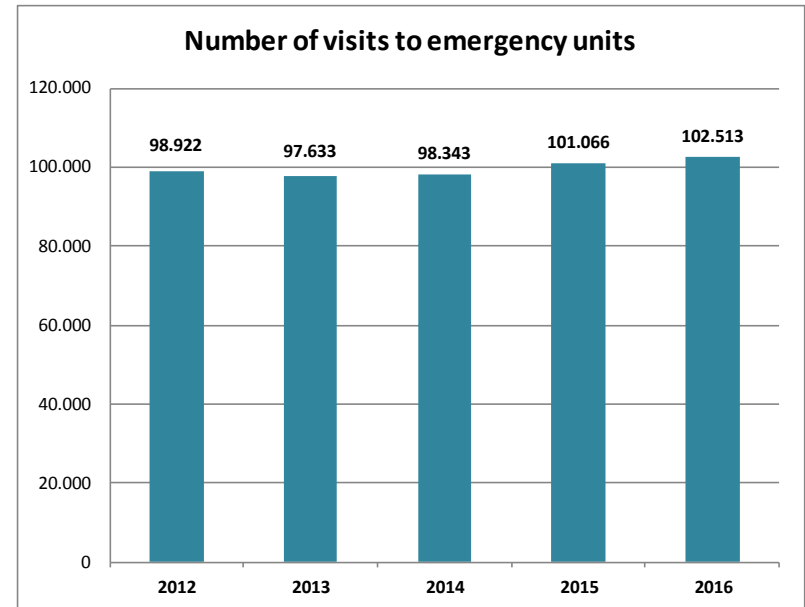
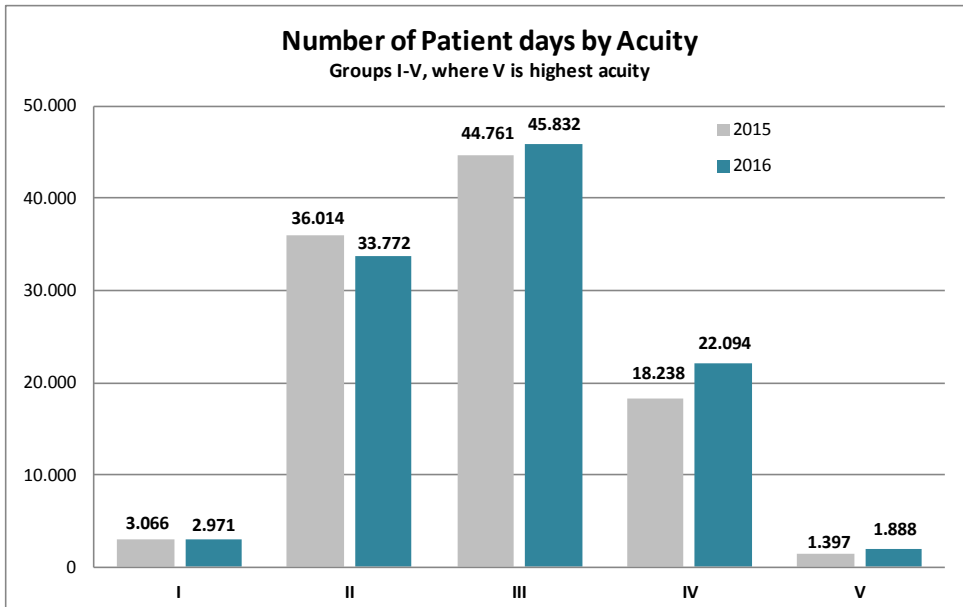
Number of individuals receiving hospital care





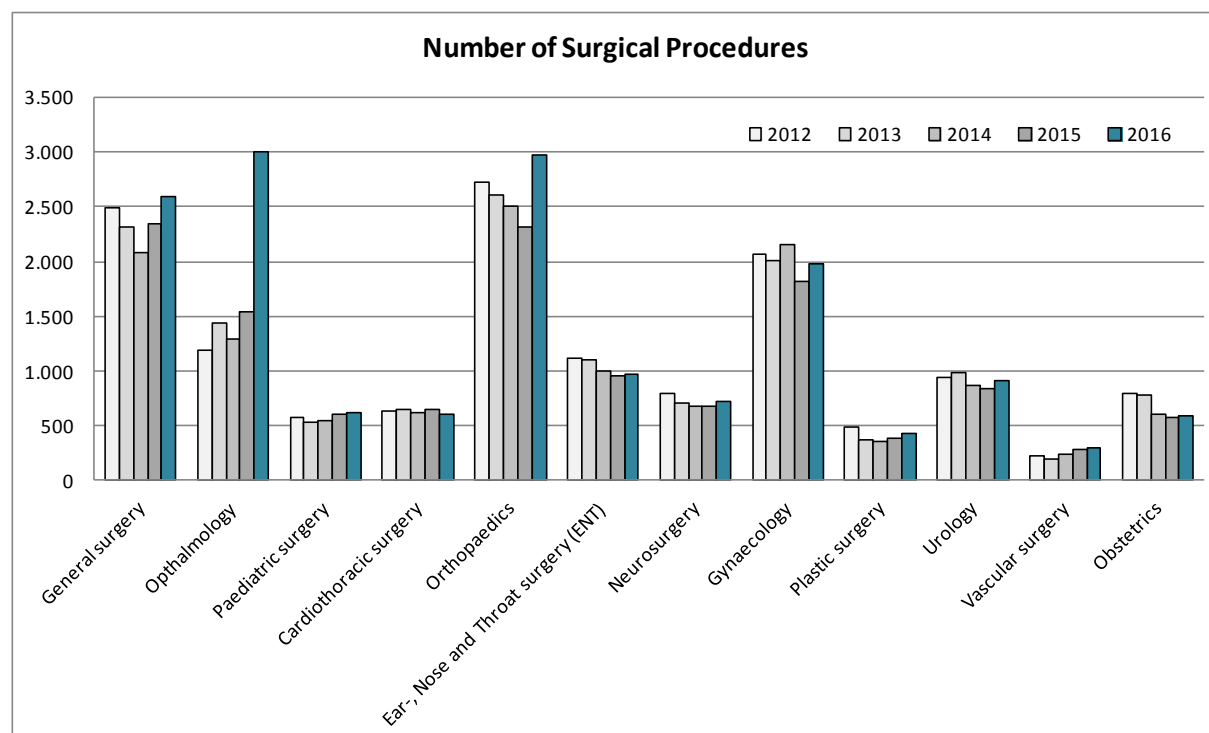
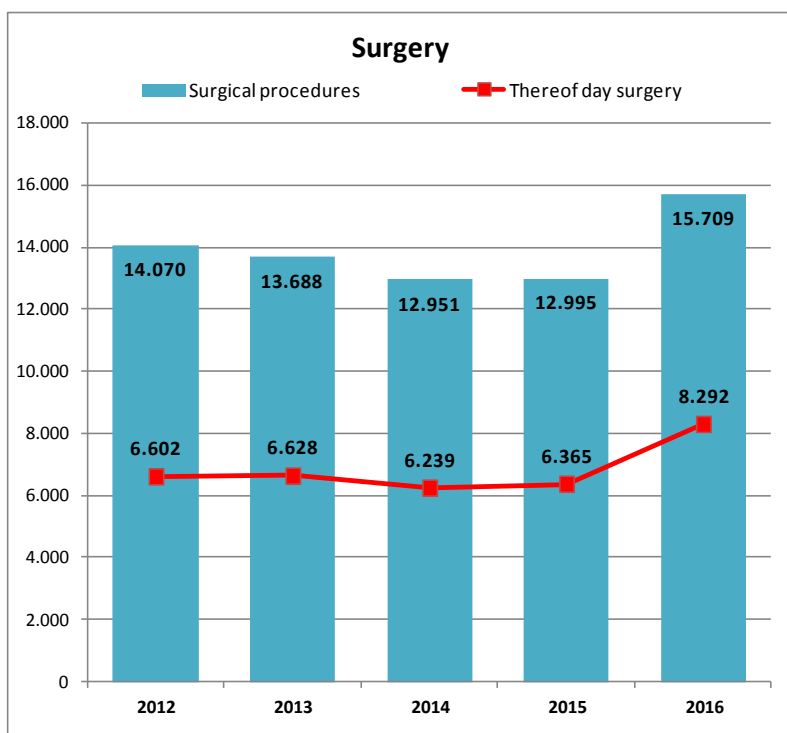
### Emergency Visits

	Number of visits			Average number of visits per day		Admissions		Percentage admitted	
	2016	2015	Changes	2016	2015	2016	2015	2016	2015
	Women's Services	4.208	3.976	232	11	11	803	695	19,1%
Children's Services	14.018	14.502	-484	38	40	810	844	5,8%	5,8%
Mental Health Services	4.959	5.341	-382	14	15	893	975	18,0%	18,3%
Cardiac Emergency Unit	7.028	5.552	1.476	26	25	1.471	1.210	20,9%	21,8%
Emergency Unit in Fossvogur, thereof;	72.300	71.695	605	198	196	8.041	8.300	11,1%	11,6%
<i>high priority (G2)</i>	31.001	31.104	-103	85	85	7.253	7.611	23,4%	24,5%
<i>low priority (G3)</i>	41.299	40.591	708	113	111	788	689	1,9%	1,7%
<b>Total emergency visits</b>	<b>102.513</b>	<b>101.066</b>	<b>1.447</b>	<b>287</b>	<b>286</b>	<b>12.018</b>	<b>12.024</b>	<b>11,7%</b>	<b>11,9%</b>

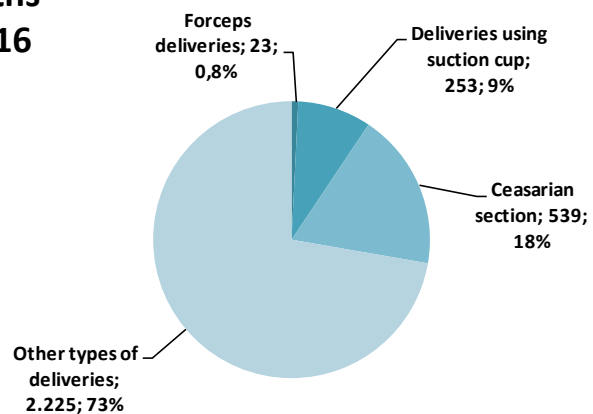


### Surgical Procedures

	Total		Increase/ decrease	Acute procedures		Day surgery	
	2016	2015		2016	Proportion	2016	Proportion
General surgery	2.599	2.347	10,7%	896	34,5%	980	37,7%
Ophthalmology	2.999	1.548	93,7%	147	4,9%	2.863	95,5%
Paediatric surgery	618	601	2,8%	238	38,5%	312	50,5%
Cardiothoracic surgery	605	651	-7,1%	219	36,2%	41	6,8%
Orthopaedics	2.967	2.321	27,8%	1.321	44,5%	1.060	35,7%
Ear-, Nose and Throat surgery (ENT)	976	956	2,1%	160	16,4%	645	66,1%
Neurosurgery	725	673	7,7%	134	18,5%	368	50,8%
Gynaecology	1.981	1.819	8,9%	510	25,7%	1.176	59,4%
Plastic surgery	429	385	11,4%	66	15,4%	194	45,2%
Urology	912	846	7,8%	137	15,0%	539	59,1%
Vascular surgery	302	276	9,4%	94	31,1%	93	30,8%
Obstetrics	596	572	4,2%	384	64,4%	21	3,5%
<b>Total</b>	<b>15.709</b>	<b>12.995</b>	<b>20,9%</b>	<b>4.306</b>	<b>27,4%</b>	<b>8.292</b>	<b>52,8%</b>
Intraocular injections for treatment of age-related macular degeneration	5.250	4.717	11,3%	0	0,0%	5.250	100,0%



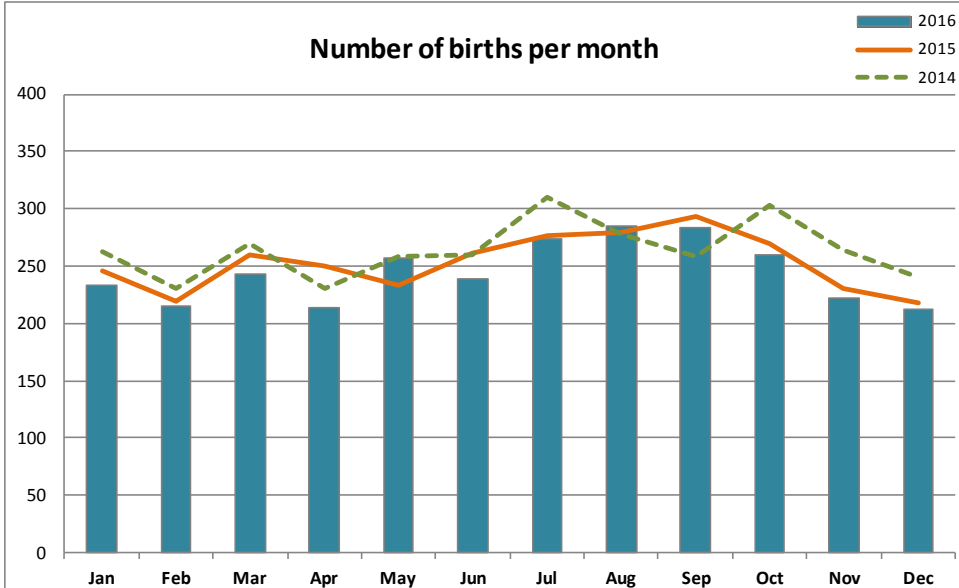
## Births 2016



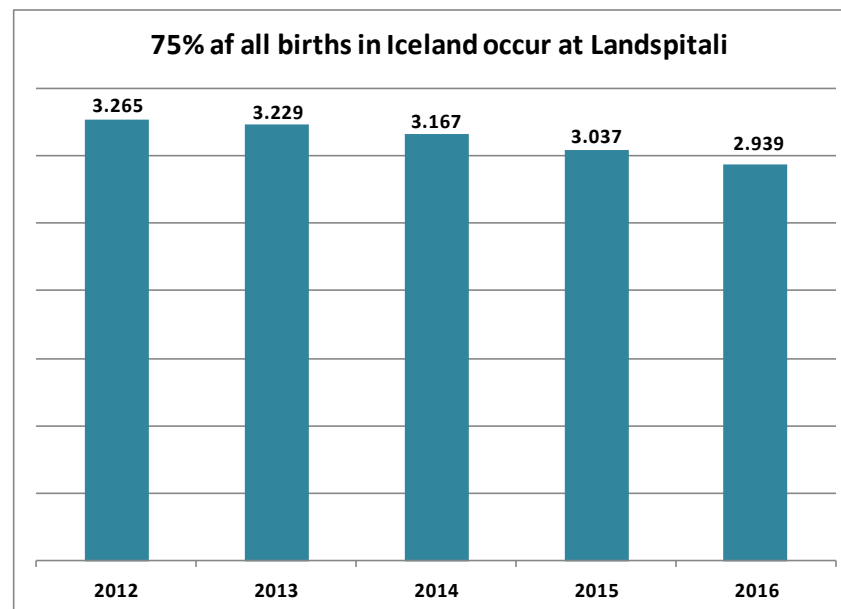
## Births

	2016	2015	Increase/ decrease
Number of births, thereof	2.940	3.037	-3,2%
number of twins	64	66	-3,0%
number of triplets	2	1	-
proportion of all births in Iceland	74,1%	75,4%	-1,7%
Number of babies	3.006	3.105	-3,2%
Multiple births	2,2%	2,2%	-
Caesarean section rate	18,3%	17,8%	-

## Number of births per month

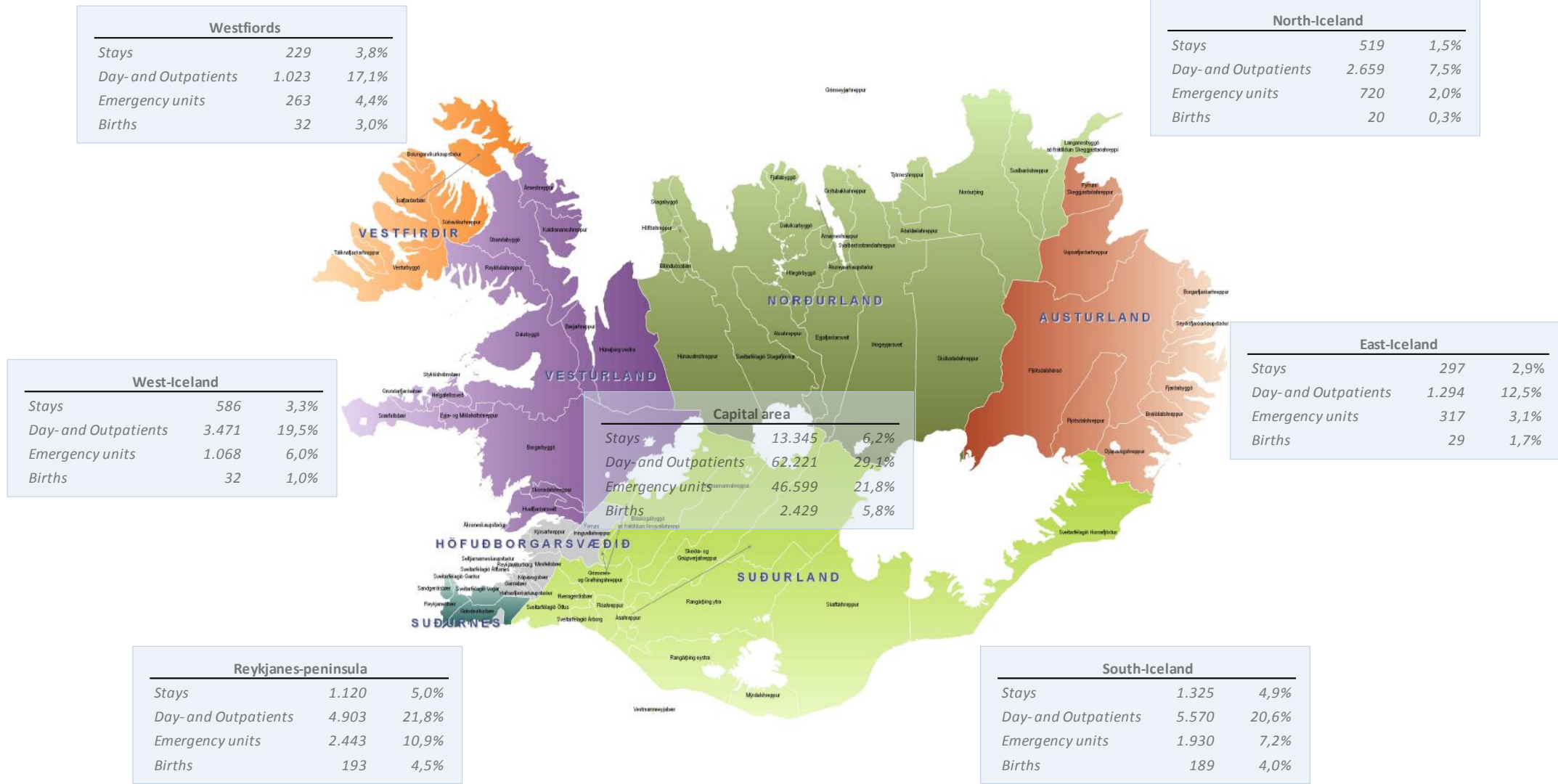


## 75% of all births in Iceland occur at Landspítali



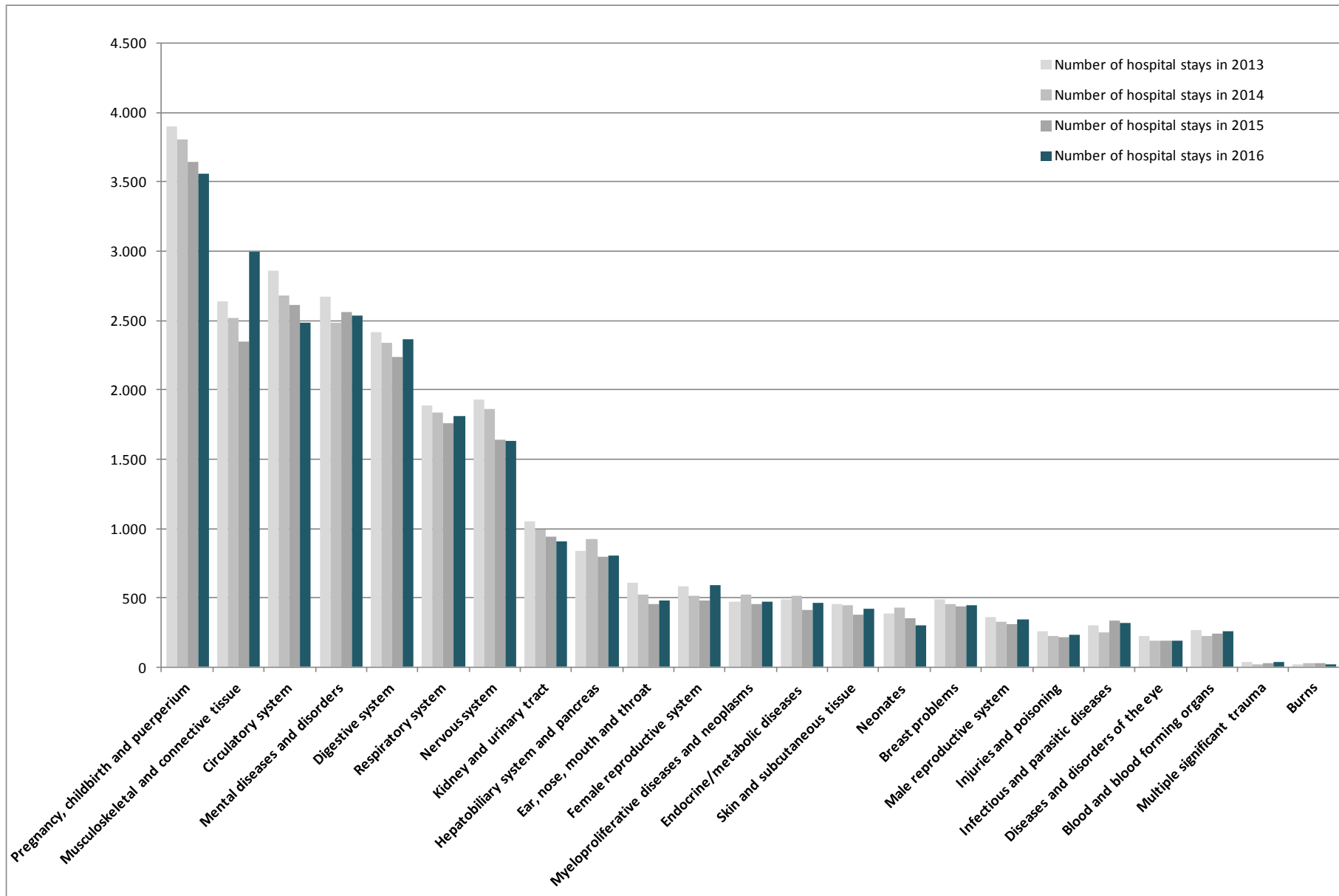
# Our patients come from all parts of Iceland

Patients seeking health care services at Landspítali come from all health districts in the country. The first column shows the number of patients, the second column shows the percentage of inhabitants in each area that had at least one contact with Landspítali in 2016. Percentage of births is calculated from the number of women at the age of 18 to 45 living in the area.

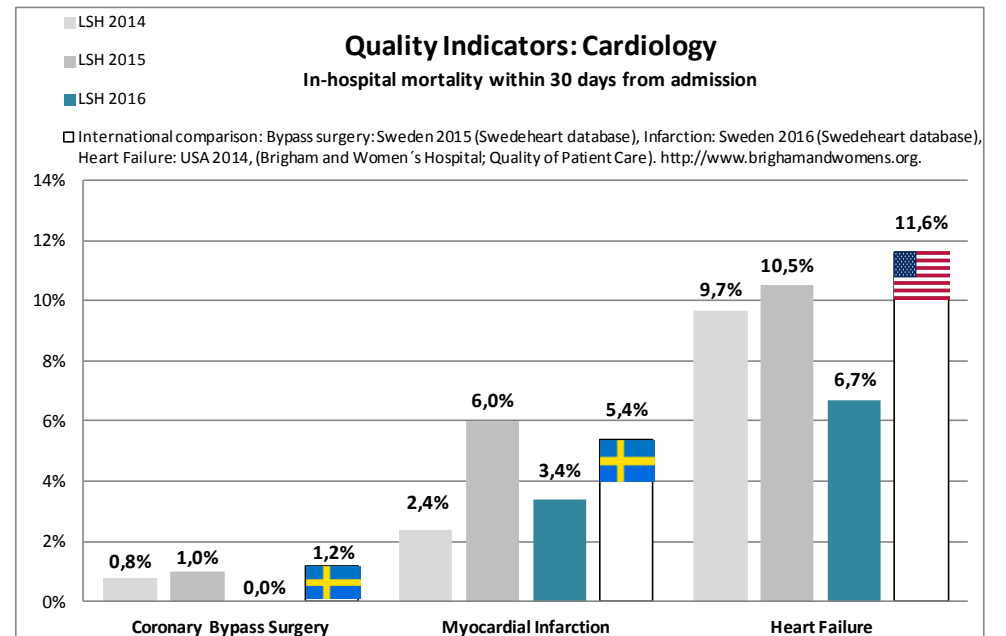
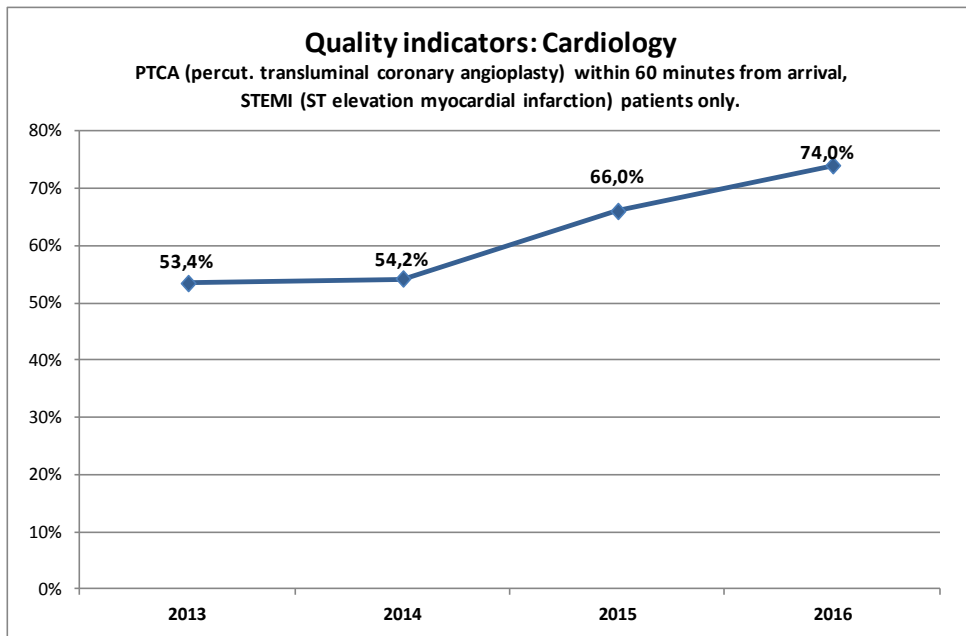
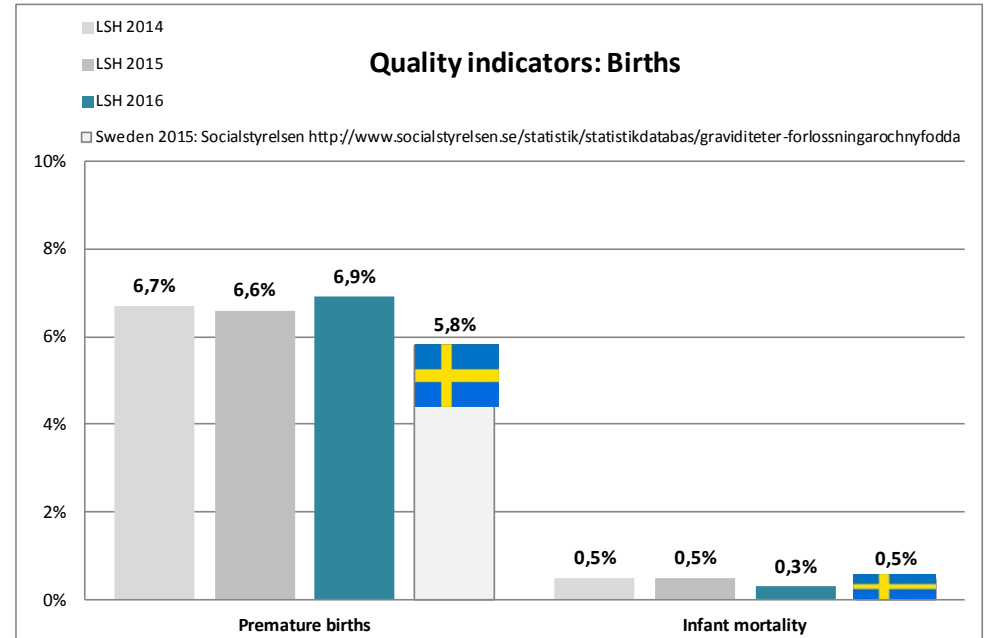
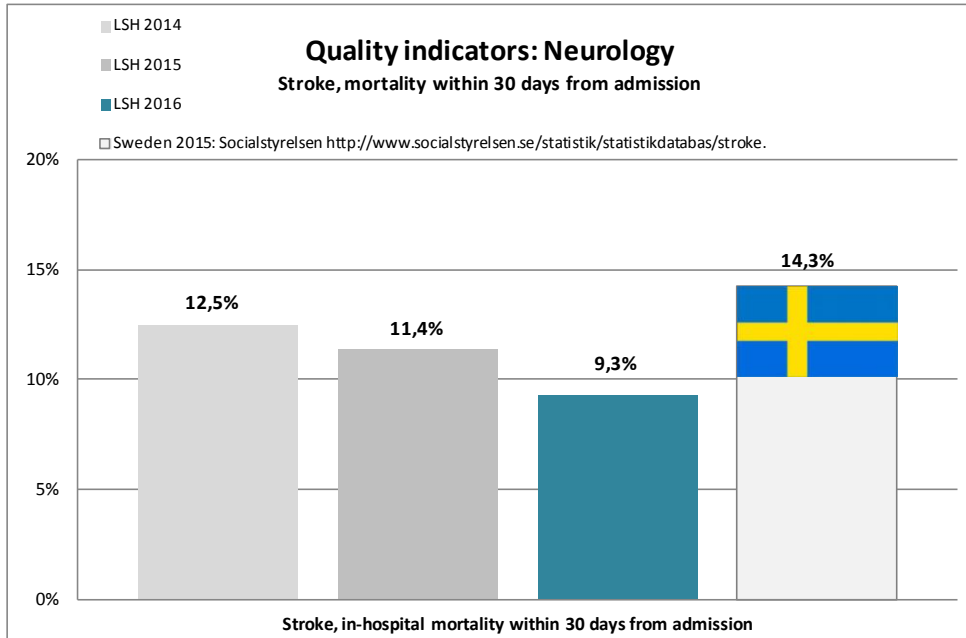


# Inpatients; Main Diagnostic Categories (MDC) of the Diagnosis Related Groups (DRG) system

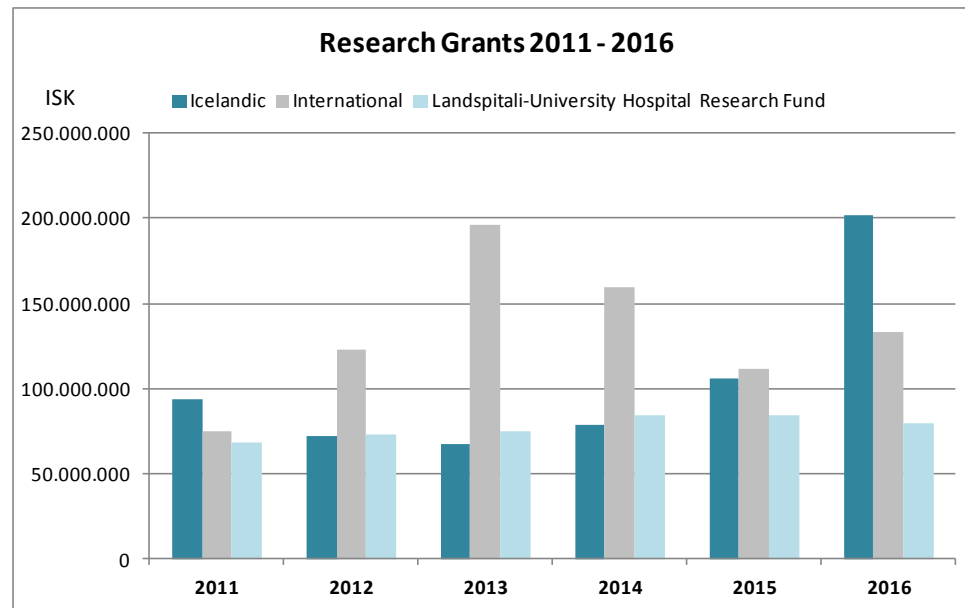
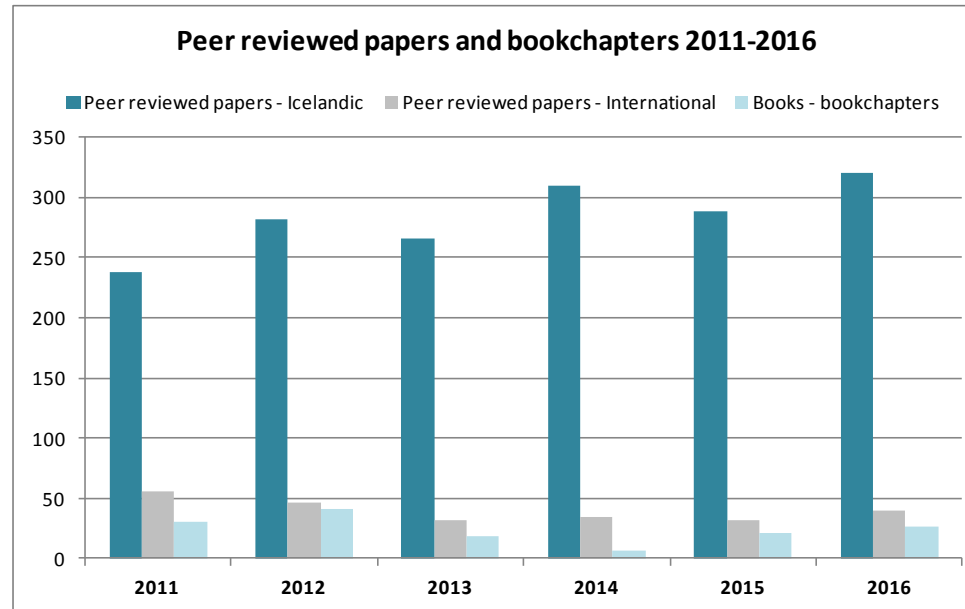
Number of inpatient stays 2013-2016



# Quality indicators, examples



# Academic research in university hospitals - foundation for quality care

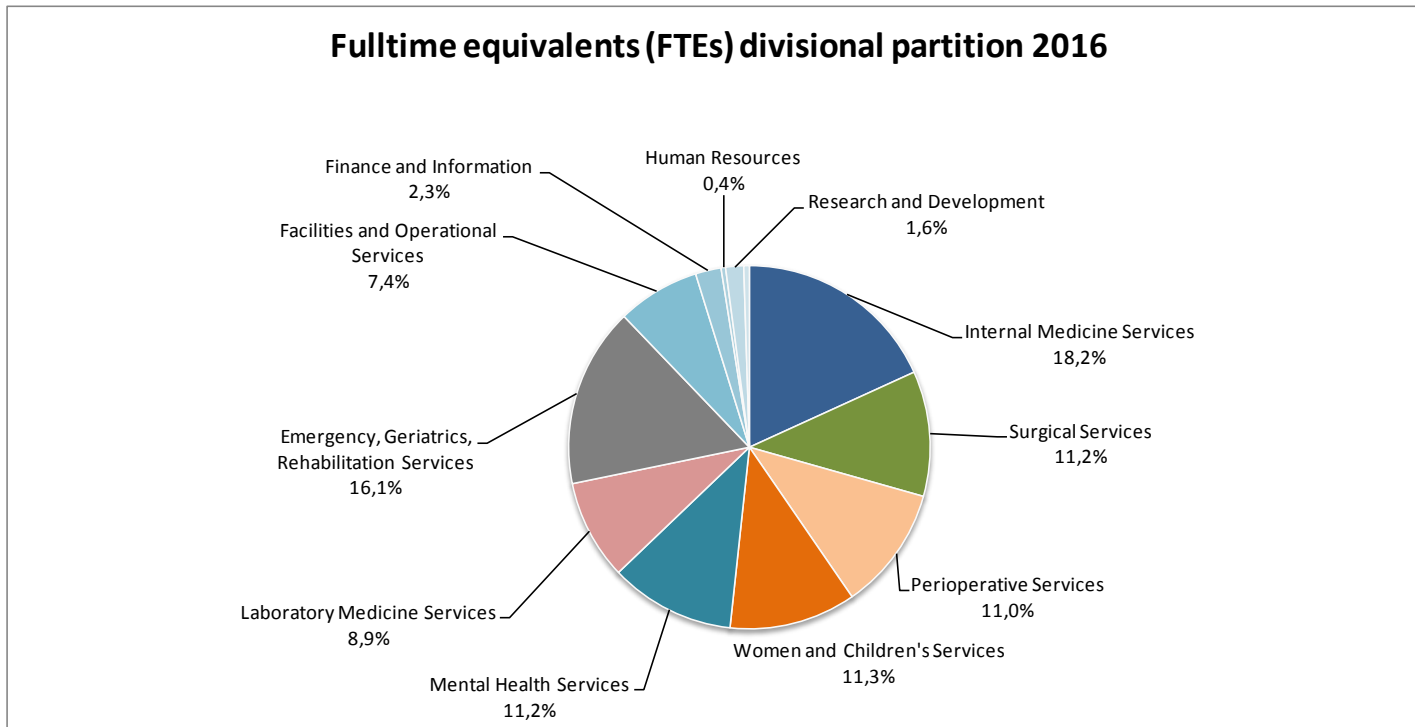
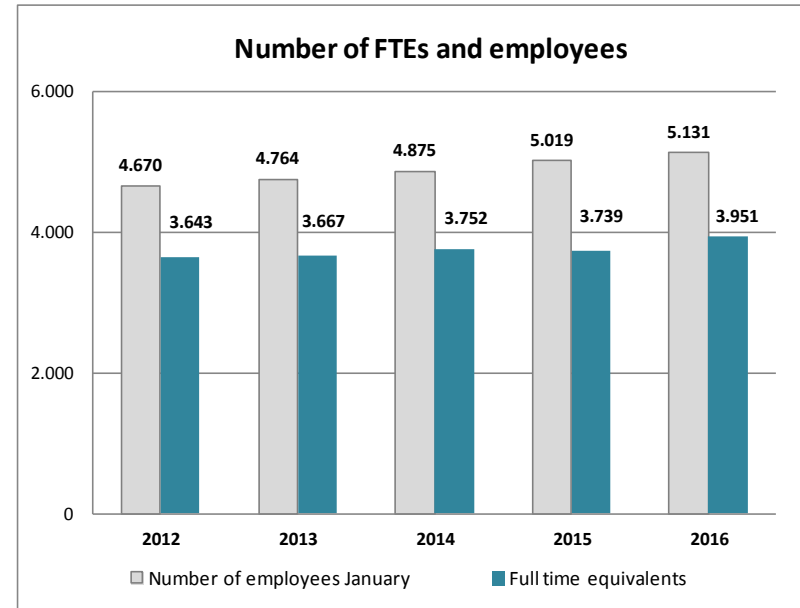


# Human resources

## Full-time equivalents (FTEs)

	Full-time equivalents (FTEs)	
	2016	2015
Internal Medicine Services,	718,8	676,1
Surgical Services	442,0	422,3
Perioperative Services	436,1	404,0
Women and Children's Services <sup>1)</sup>	445,9	435,3
Mental Health Services	440,6	432,0
Laboratory Medicine Services	352,1	322,2
Emergency, Geriatrics, Rehabilitation Services	634,8	601,0
Facilities and Operational Services	291,3	289,4
Finance and Information	90,4	86,7
Human Resources	15,8	13,6
Office of the Chief Medical Executive and the Office of the Chief Nursing Executive	63,4	41,7
Office of the Chief Executive	19,7	14,5
<b>Total</b>	<b>3.950,9</b>	<b>3.738,6</b>

1) Includes IT department





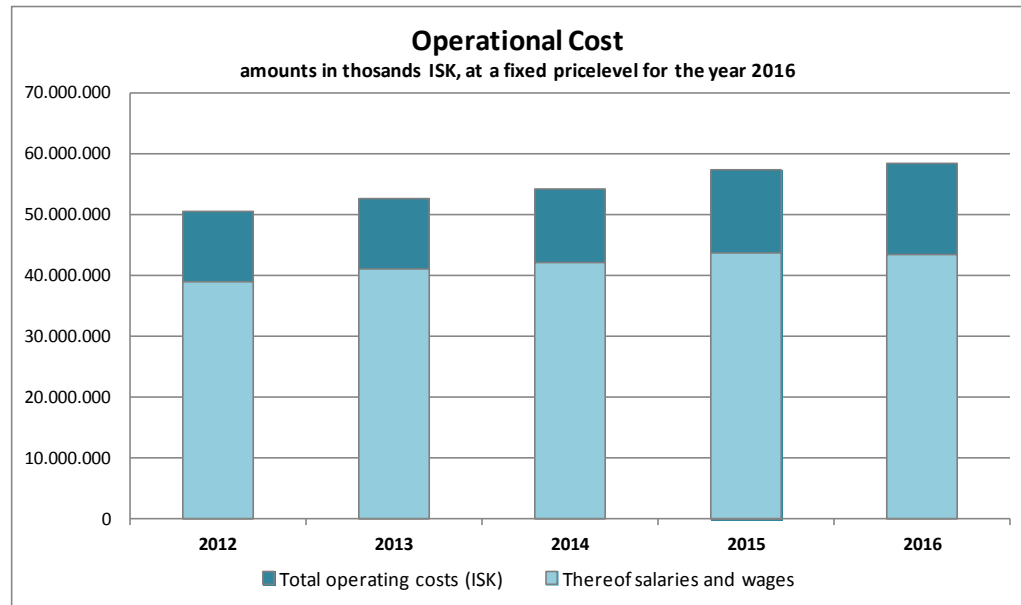
# Financial accounts

## Financial Accounts

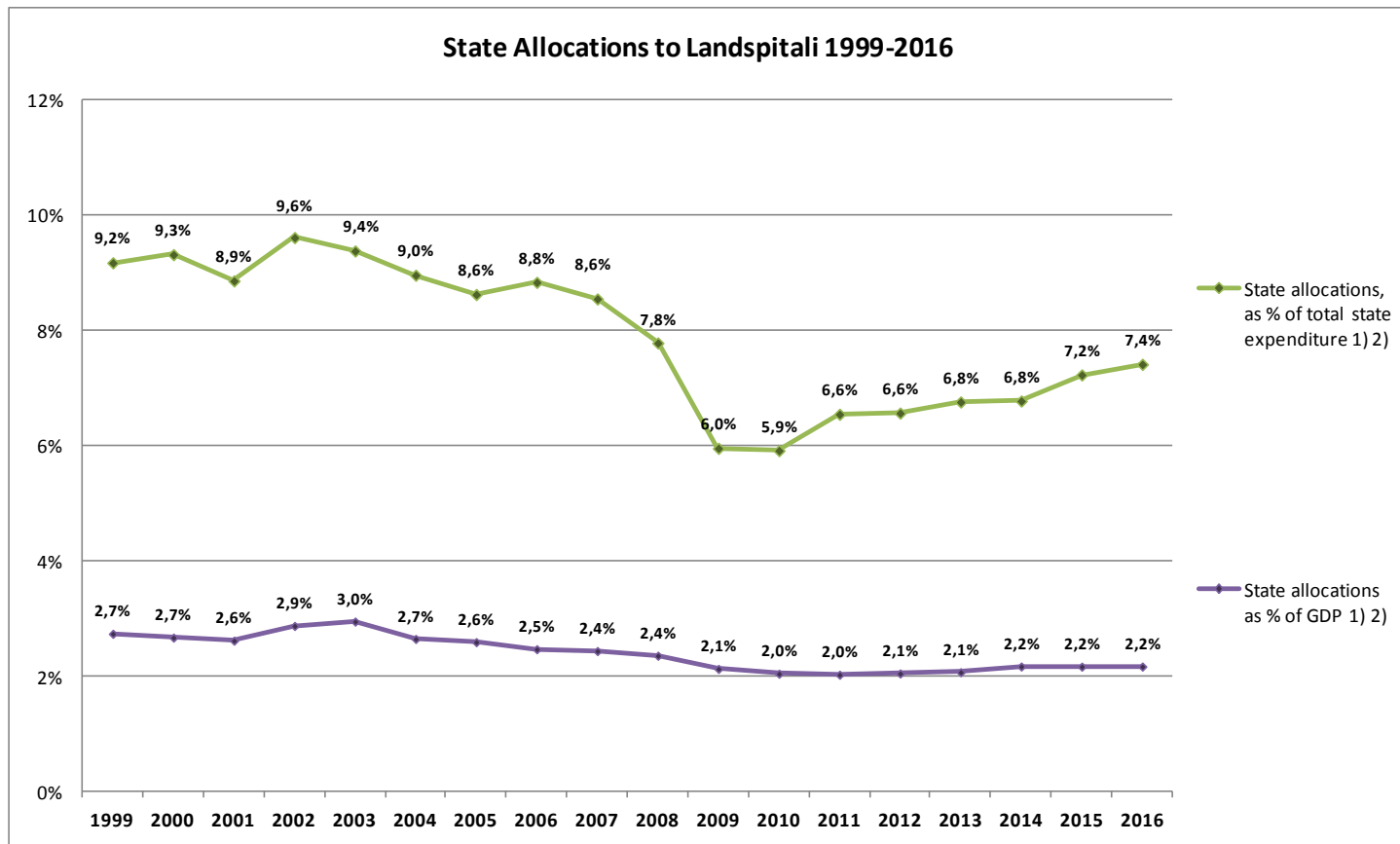
	2016	2015	2014
<b>Revenues</b>			
Allotment in State Budget	52.625,8	48.071,2	43.553,9
Revenues from patient care and other operations	8.119,3	6.563,0	4.776,5
Income from Icelandic Health Insurance for S-labelled medications <sup>1)</sup>	2.941,2	3.359,6	4.857,4
<b>Total Revenues</b>	<b>63.686,3</b>	<b>57.993,9</b>	<b>53.187,8</b>
<b>Expenses</b>			
Wages and salaries	43.552,4	38.644,8	34.719,7
Other operating expenses	15.003,1	13.639,4	12.166,8
"S-labelled" medications <sup>1)</sup>	2.788,9	3.291,1	4.758,2
Capital investments, maintenance and equipment	2.505,8	2.413,6	2.317,8
<b>Total Expenses</b>	<b>63.850,1</b>	<b>57.988,9</b>	<b>53.962,5</b>
<b>Revenues above Expenses</b>			
<b>Revenues above Expenses/(Expenses above Revenues )</b>	<b>(163,8)</b>	<b>4,9</b>	<b>(774,7)</b>
<b>Other Revenues</b>			
Financial revenues and (expenses)	78,8	50,7	25,3
<b>Total Revenues above Expenses/(Expenses above Revenues )</b>	<b>(85,0)</b>	<b>55,7</b>	<b>(749,4)</b>

Amounts in ISK millions

<sup>1)</sup> " S-labelled " medications are those intended only for hospital use and are specially provided for in the State Budget.



# State Allocations to Landspítali



1) According to State Budget

2) In the State Budget 2009 allocations for S-labelled medications were transferred from Landspítali to the Icelandic Health Insurance Agency. (S-labelled medications are those intended solely for use in hospitals.)

## Five year statistical overview

### Five years statistical overview <sup>1)</sup>

### Fem års statistisk oversigt <sup>1)</sup>

	2016	2015	2014	2013	2012	
<b>Population development in the capital area <sup>2)</sup></b>						<b>Udvikling af befolkningen i hovedstadsområdet <sup>2)</sup></b>
Number of inhabitants	213.619	211.282	208.752	205.675	203.594	Befolkning
Annual increase	1,11%	1,21%	1,50%	1,02%	0,62%	Årlig vækst
Number of inhabitants age 70 years and older	19.183	18.582	18.021	17.556	17.082	Antal beboere 70 år og ældre
Proportion of inhabitants age 70 years and older	8,98%	8,79%	8,63%	8,54%	8,39%	Procent beboere 70 år og ældre
Number of inhabitants age 80 years and older	7.684	7.584	7.425	7.320	7.148	Antal beboere 80 år og ældre
Proportion of inhabitants age 80 years and older	3,60%	3,59%	3,56%	3,56%	3,51%	Procent beboere 80 år og ældre
<b>Key operational statistics <sup>3)</sup></b>						<b>Nøgletal for hospitalet <sup>3)</sup></b>
Total operational costs (ISK) <sup>4)</sup>	58.552.570	57.282.632	54.202.082	52.769.037	50.462.046	Samlede udgifter <sup>4)</sup>
Salaries	74%	76%	78%	78%	77%	Udgifter til personale
Number of individuals receiving hospital care	110.235	106.912	107.766	107.056	106.528	Antal personer som fik tjeneste fra hospitalet
Emergency units, visits	102.513	101.066	98.343	97.633	98.922	Skadestue, antal besøg
Outpatient units visits, thereof <i>dayward units, visits <sup>1)</sup></i>	241.335 83.651	226.488 75.088	226.521 83.639	236.833 77.811	235.403 77.922	Ambulante besøg, deraf <i>dagpatienter, antal besøg <sup>1)</sup></i>
Patient days <sup>1)</sup>	228.660	224.117	219.981	215.357	213.515	Antal sengedage <sup>1)</sup>
Admissions <sup>1)</sup>	26.277	25.227	26.227	26.753	27.317	Antal indlæggelser <sup>1)</sup>
Average length of stay, thereof <i>stays &lt; 6 months</i>	8,9 7,8	8,9 7,9	8,3 7,5	8,6 7,3	8,4 7,2	Gennemsnitlig liggetid, deraf <i>liggetid &lt; 6 måneder</i>
DRG casemix index, inpatients <sup>5)</sup>	1,14	1,12	1,12	1,14	1,12	Gennemsnitlig DRG-vægt af indlagte patienter <sup>5)</sup>
Total DRG units <sup>5)</sup>	45.236	42.158	43.118	44.728	44.406	Samlede DRG enheder <sup>5)</sup>
Hospital beds	687	667	674	650	649	Antal senge
Surgical procedures <sup>1)</sup> , thereof <i>same day surgery</i>	15.709 8.292	12.995 6.365	12.951 6.239	13.688 6.628	14.070 6.602	Kirurgiske behandlinger <sup>1)</sup> , deraf <i>dagskirurgi</i>
Number of births	2.940	3.037	3.133	3.229	3.265	Antal fødsler
Diagnostic services, thereof <i>Diagnostic imaging</i>	2.266.755 127.913	1.906.030 113.072	1.967.654 118.568	1.921.338 116.600	1.832.182 123.901	Diagnostiske undersøgelser, deraf <i>antal radiologiske undersøgelser</i>
Staffing, full time equivalents	3.951	3.739	3.752	3.667	3.643	Antal ansatte/årsværk
Number of employees	5.131	5.019	4.875	4.764	4.670	Antal ansatte personer
Staff turnover	12,2%	11,7%	10,4%	11,1%	11,1%	Personale omsætning

1) Figures in 2015 are affected by strikes. Tallene i 2015 er påvirket af strejker.

2) Data from Statistics Iceland. Data fra Islands Statistik.

3) Data from hospital annual reports. Data fra hospitalets årsberetning.

4) Numbers in thousands (ISK), at fixed price level for the year 2016. Tal i tusind (ISK), ved fast pris for året 2016.

5) Total DRG units based on 2016 DRG weights. Without newborns, rehabilitation and patient hotel. Samlede DRG enheder baseres på 2016 DRG vægt. Uden nyfødte, rehabilitering og patienthotel.

	2016	2015	2014	2013	2012	
Average exchange rate USD to ISK	120,67	131,85	116,75	122,23	125,05	Gennemsnitlig valutakurs USD til ISK
Average exchange rate EUR to ISK	133,59	146,30	154,86	162,38	160,73	Gennemsnitlig valutakurs EUR til ISK

Updated/Opdateret May / maj 2017